

NOW
2018
Staff Career Development
Conference

*Inspiring
Sustainable
Opportunities*



Sailing the Berkeley Seas:

**Friend-ship, Mentor-ship,
and Sponsor-ship Across Campus**

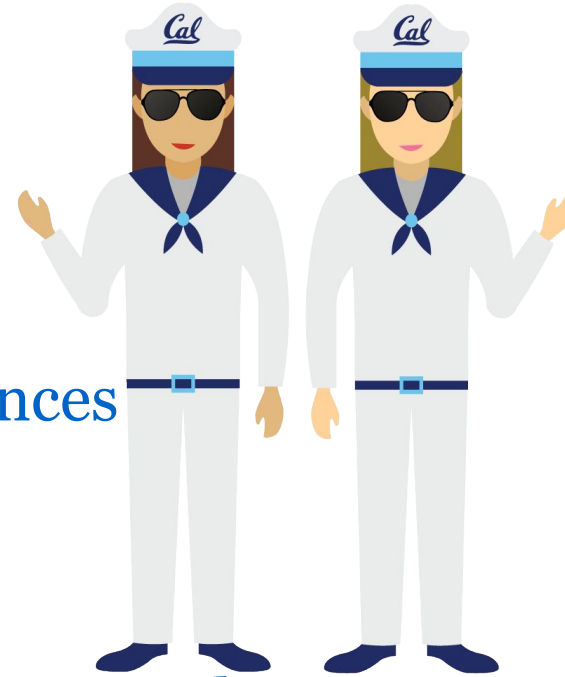
with Meaghan DeRespini and Erin Leigh Inama

Ahoy!

Meaghan DeRespini
Undergraduate Advisor for Nutritional Sciences
College of Natural Resources

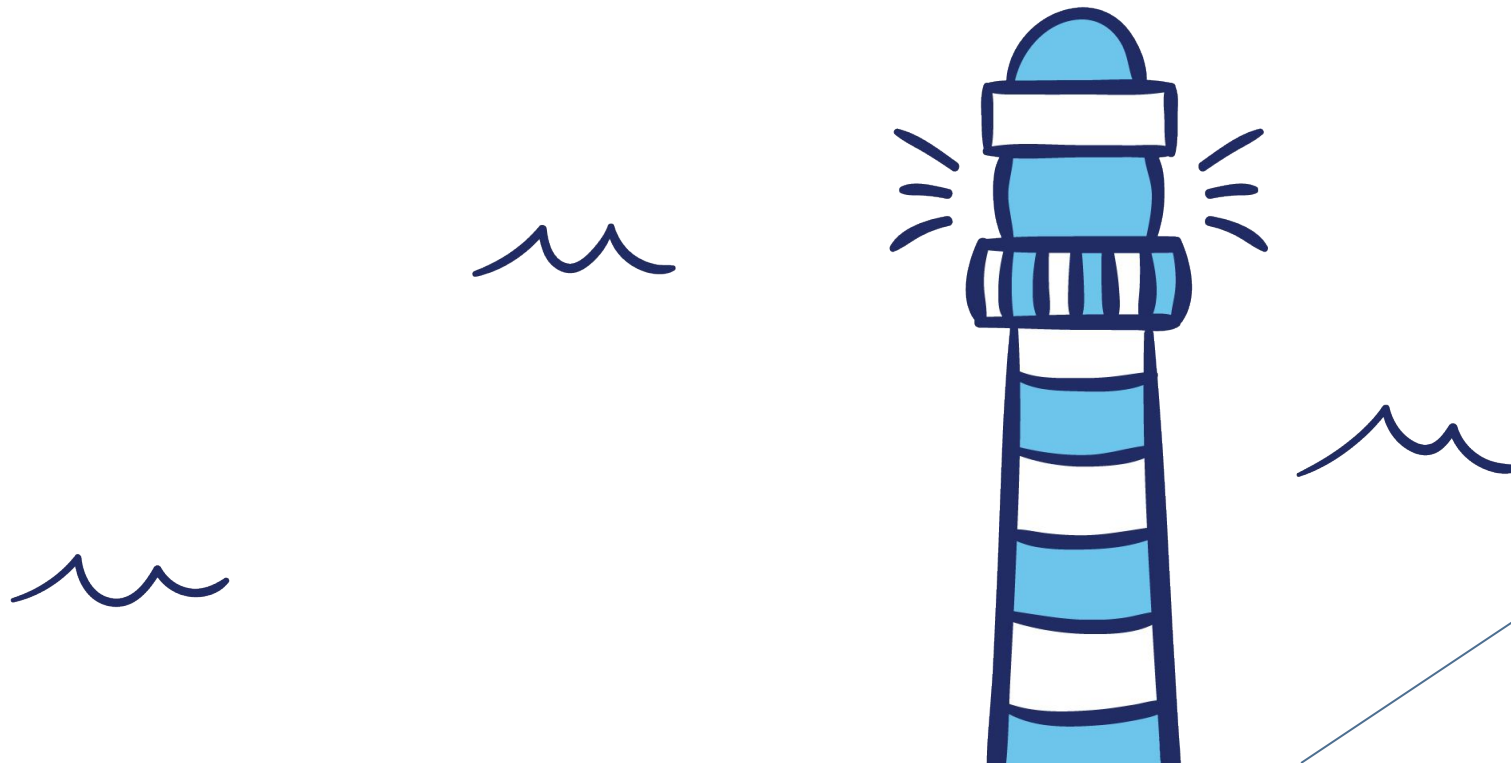
Erin Leigh Inama
Graduate Admissions and Undergraduate Minor Advisor
Department of History

Co-chairs of Berkeley Staff Assembly's Career Development
Committee, which coordinates the Mentorship Program



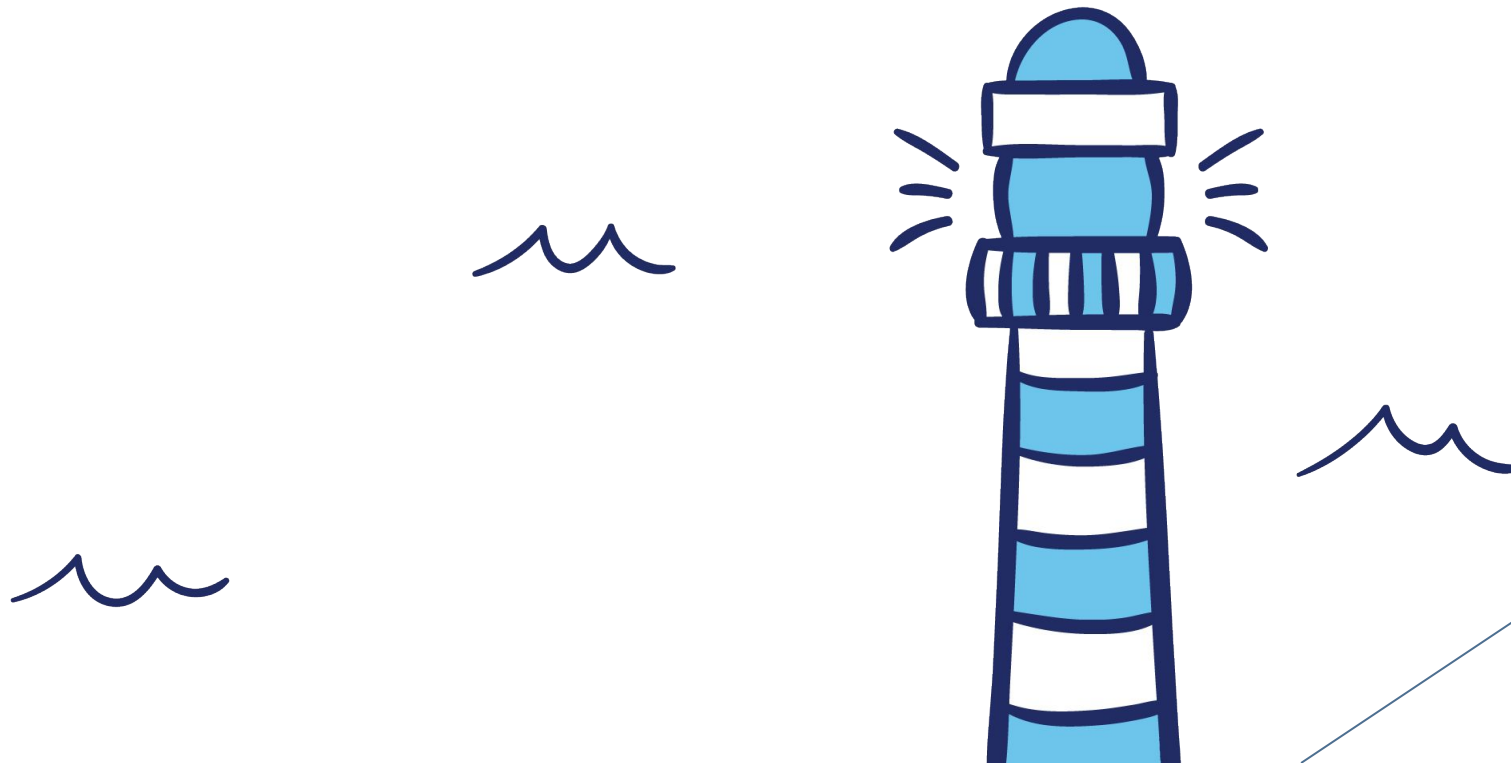
Friendship /'frɛn(d)ʃɪp/

Accord, alliance, peace; a state of mutual trust and support between allied nations or peoples.



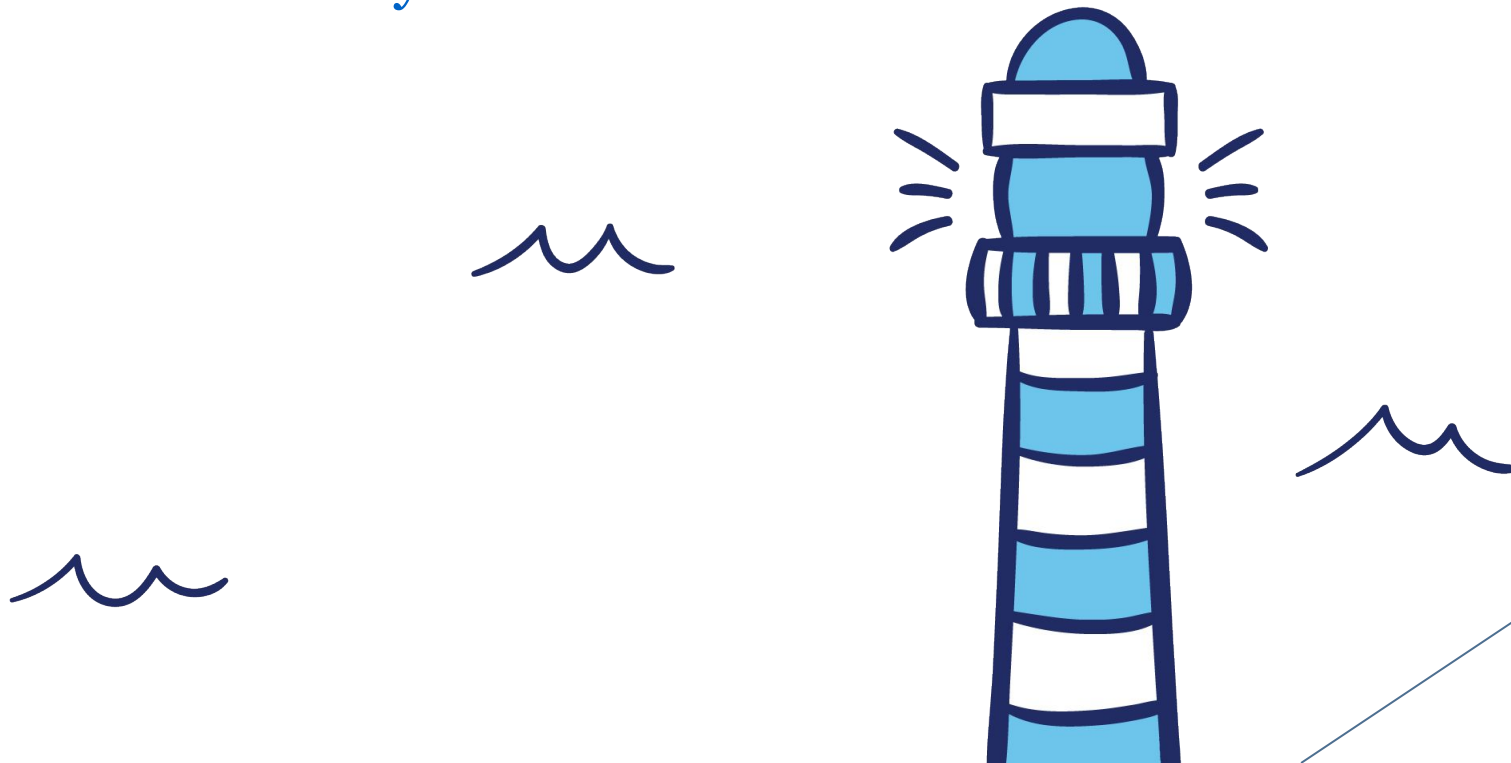
Mentorship /'mɛn(t)ər_ʃɪp/

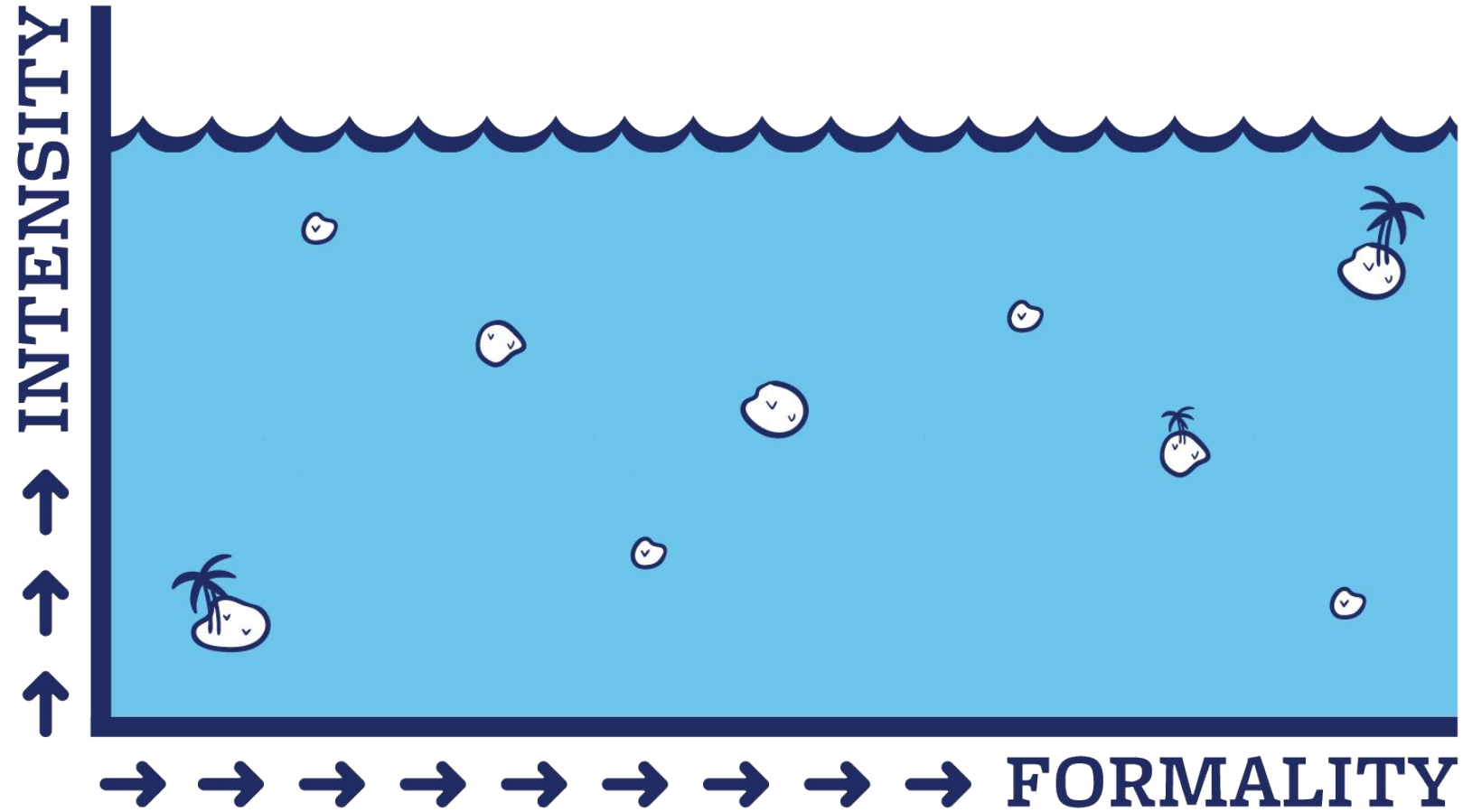
Advice provided by a mentor, a person who acts as guide to another person, esp. one who is younger and less experienced



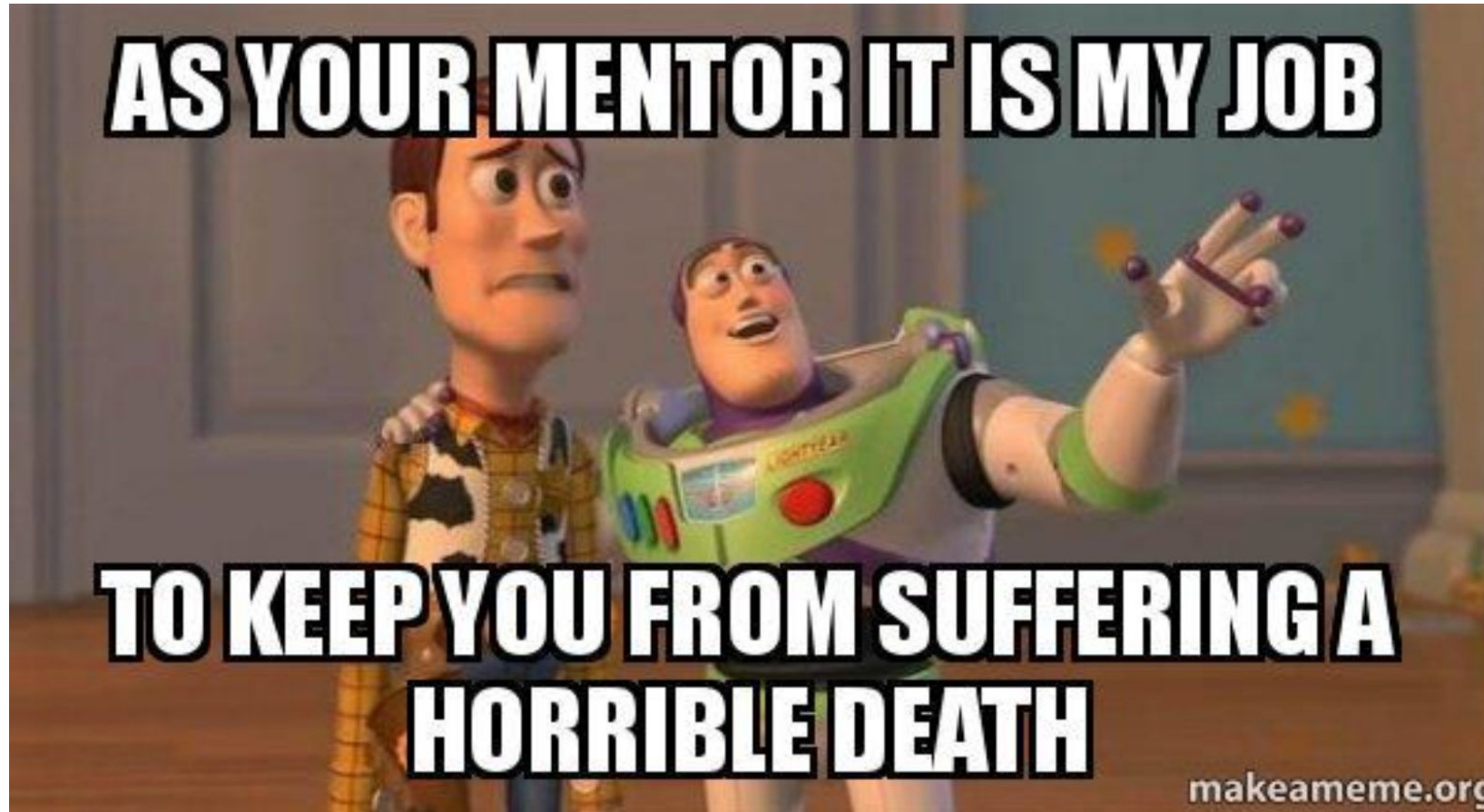
Sponsorship /'span(t)sər_ʃɪp/

Backing provided by a sponsor, a person who will advocate for you in the workplace when you need to be more visible, common to private industry and academia





Mentorship matters



Learn the ropes

Career Development Committee

- Other BSA opportunities

Staff orgs

- Cal Women's Network
- Staff Alliance for Disability
Access

Communities of Practice

- BFN
- BPAWG

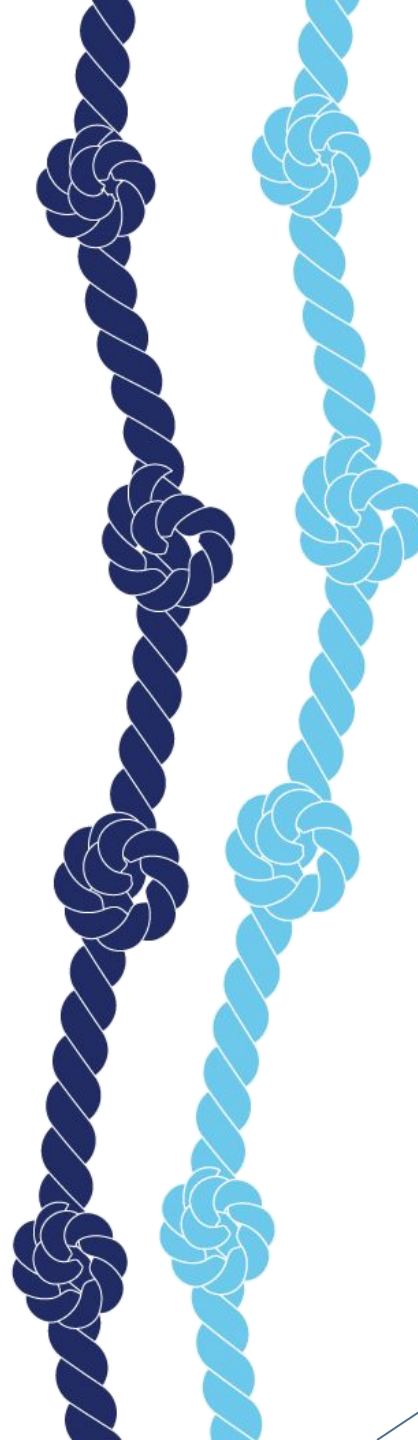
My UC Career

HR Learning & Development

- lynda.com

LinkedIn

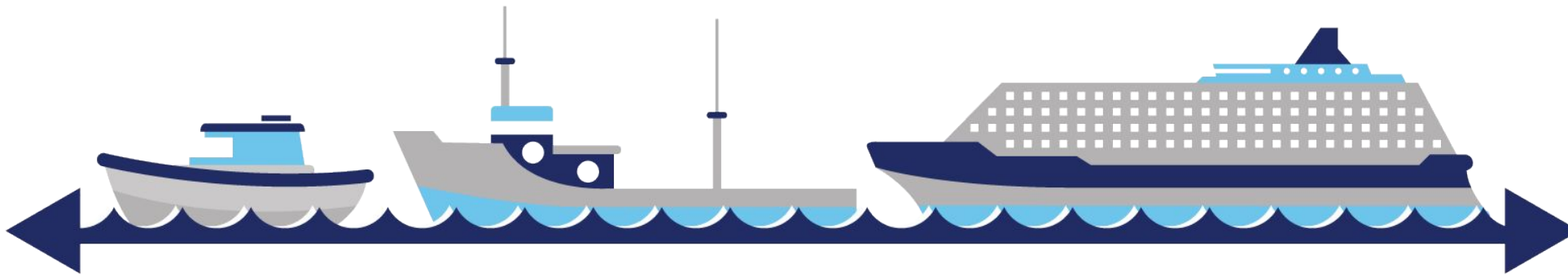
Existing networks



Determine your coordinates



Choose your vessel



Assemble your crew

Consider

- your interests and goals
- what guidance or support you hope to receive
- how a mentor can help you expand your skills and network

Execute

- research in advance
- questions that will elicit answers to knowledge gaps you have
- cast your net and reel it in!



Set sail

Begin by introducing yourself with your elevator speech:

- My name is..
- I am..
- I have/can..
- I want..

Followed by:

- I'd like to know..
 - How you got to this point in your career (education, training, other roles)
 - What has been important to you in your career?
 - What kind of challenges have you faced?
 - What resource/tool/skill have you found most helpful in navigating the Berkeley seas?



Return to port

What did you learn about yourself from introducing yourself this way?

What did you learn about your partner?

Where do you identify your own areas of strength/growth?

- Which campus resources do you think can help you grow?
- How can you contribute your areas of strength?

How can you leverage connections that were made today, moving forward?



Anchor's aweigh!



Send a flare

Meaghan DeRespini
meaghan@berkeley.edu

Erin Leigh Inama
elinama@berkeley.edu

BSA Career Development Committee
bsamentorship@berkeley.edu

